



Merry
Christmas

DECEMBER 2013 MESSENGER

144 PLANTATION DR.
TITUSVILLE, FL 32780

(321) 383-0303

WWW.TGOCHURCH.ORG

EMAIL:

INFO@TGOCHURCH.ORG

WORSHIP SERVICE

9:30 A.M.

WORSHIP TEAM

LEAD PASTOR

DR. DAVID W. PRICE

MINISTER OF VISITATION

DAVE MURTON

MINISTER OF SMALL GROUPS/ADMINISTRATION

WES HYDE

DIRECTOR OF MUSIC

PATRICIA HOPPER

MESSENGER STAFF

EDITORS

WES HYDE
JANE MILLSAPS

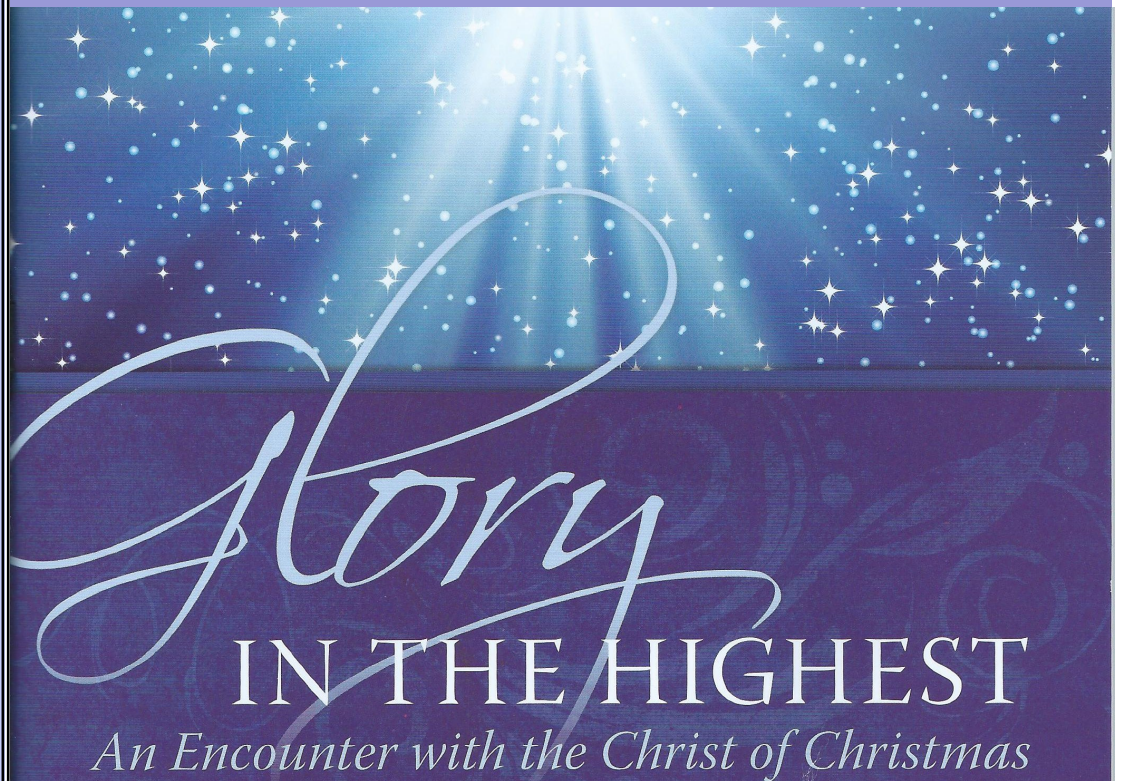
PUBLISHER

JANE MILLSAPS

PHOTOGRAPHY

LORETTA ANNÉ

Chancel Choir Christmas Cantata



IN THE HIGHEST

An Encounter with the Christ of Christmas

Wednesday

December 11, 2013

7:00 PM

Love Offering will be received

Refreshments Following

ALL ARE WELCOME!




Great Outdoors Community Church



CHURCH BOARD

PRESIDENT	Dan Zahn
VICE PRESIDENT	Dwight Nestruck
SECRETARY	Sue Kalkman
TREASURER	Kearney Kier
FACILITIES	George Mattila
FINANCE	George Eisemann
HOSPITALITY	Ruth MacDonald
OUTREACH	Judy Evans
WORSHIP	Lyn Dunn
MISSIONS	Mark Herbers

CHURCH WEBSITE

Check out our CHURCH WEBSITE! Take a minute, open the following website and have a look: www.tgochurch.org There is a lot of information about our church and what is happening. There are many pictures, recordings of the Sunday Sermons, Choir Anthems, and Special Music that you can listen to online or burn to a CD for later playback. If you have any questionsask Paul Thomas, Roger Bieberich, Bill Severance, or call the Church Office.

CHRISTMAS POINSETTIAS

Please sign up for a Christmas Poinsettia to decorate our church for Christmas. You may specify loved ones that you wish to memorialize or honor. The cost is \$15.00 per poinsettia. They will be displayed on Sunday, Dec. 22nd. Any funds remaining after the purchase of the poinsettias will be distributed to one of our church supported ministries. Please sign up in the Fellowship Hall on Dec. 1, 8 or 15, or call Rosemary Stagg at 282-7767.



Deadline for the January 2014 Messenger is Wednesday, December 18.



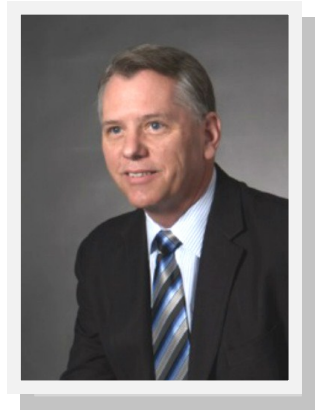
Please Note:

Beginning in January 2014 we will have two services each Sunday. First service at 8:30 AM with fellowship time afterwards. Second service at 10:15 AM.



REFLECTIONS

Dr. David W. Price ~ Lead Pastor



The “Heaven Side” Of Christmas

It's the Christmas season once again. We barely get past Thanksgiving, when the season seems to gain momentum.

Everywhere you look Christmas decorations are beginning to appear. The malls and shopping centers are already decorated and are offering early Christmas shopping.

All of these things point to the “human side” of Christmas. We put up a Christmas tree and decorations. We buy presents for each other. We go to neighborhood Christmas parties and travel to see friends and family.

The “human side” of Christmas can be a wonderful time of love, family, and friendship.

There is another side of Christmas – the “heaven side”. It's what God intended at the First Christmas.

The “heaven side” of Christmas is told to us in the Gospels in such magnificent terms. It is Christmas in the “grand scheme” of God. Christmas is what God the Father orchestrated when He sent His One and Only Son to redeem the world from sin. It's like a majestic movement in a musical masterpiece:

The Star in the East . . . shines ever so brightly.

The Angels announce Jesus' birth to the shepherds.

The Shepherd's visit the place where the King of the Jews is born.

The Magi travel from afar to bring gifts to the new King of Israel.

Christmas is God the Father's delivery of the greatest Christmas gift ever given and received. It's the moment when God intervenes in the long night of sin and bondage and gives us the gift of the ‘Light of the World.’”

This Christmas, we have yet another opportunity to see the “Heaven Side” and the “Human Side” of Christmas in operation. Let's make the most of it!

Merry Christmas,

Dr. David W. Price

Lead Pastor



Recently, we had the joy of seeing three of our church members be baptized. It was such a great thing to witness Jesus' commandment to "baptize them in the Name of the Father, the Son and the Holy Spirit."

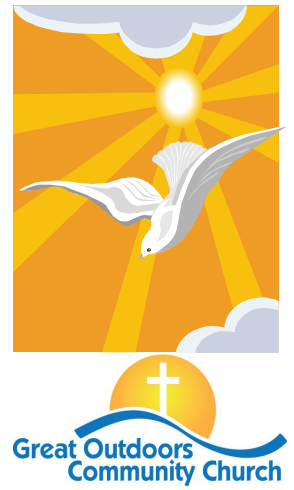
As Tom, Steve, and Walt were baptized they presented an outward confession of an inward experience: They publically professed that Jesus is Lord of their lives.

It was great to see so many come out to share this moment together. We are looking forward to the next baptism.

Blessings,

Dr. David W. Price

Lead Pastor



Thomas Fearon



Walter Haines



Steve Teicher





Blessing of the Prayer Shawls

November 10, 2013

The Prayer Shawl Ministry meets on the 2nd and 4th Friday of each month at 9:00 AM in the church narthex.

All are welcome to come and create shawls. Donations of 3 skeins (of the same dye lot) of yarn are always welcome for us to turn into a Prayer Shawl.

Contact Rosalind Zahn at 269-7957 if you have any questions.



Outreach Committee

The Outreach Committee activities continue:

- Track visitors and make visits
- Visit shut-ins, those who are in nursing homes, and those who are hospitalized.
- Send greeting cards to those who are grieving, ill or need a word of encouragement.
- Deliver CD's of our worship services to shut-ins (please notify the office if there is a need).
- Plan for the receiving of new members on January 12, 2014.
- We will be delivering a packet of GOCC information to new TGO residents.
- Distribute Leaves of Gold to family members who have lost a loved one and a daily devotional book to service men & women who are in active service and part of the GOCC family.

IF THERE ARE NEEDS RELATING TO THE LIST ABOVE, PLEASE NOTIFY THE CHURCH OFFICE OR JUDY EVANS, CHAIR (267-3726) The next Outreach Committee Meeting is Fri., Dec. 6 at 2:00

New Member Reception

New members will be received on Sunday, January 12th. Anyone desiring to be a member/associate member should contact the church office.

"There are two levels of membership available at Great Outdoors Community Church. You can join as a full member (no membership in another church) or as an associate member (still maintaining membership in another church). Both levels of membership afford full voting privileges and the ability to hold any elected or appointed office."

With Deepest Sympathy

To Connie Moore and family upon the loss of her husband, Jon Polyak.



To Mary Hamilton and family upon the loss of her husband, Dana Hamilton.



To Pastor Jeff & Connie Moody and family upon the loss of his brother, Bob Moody and also his nephew, Adam Kearns.

Men's Group

The Great Outdoors Community Church Men's Group is planning four informative, fun breakfasts for the season. Please mark your 2014 calendar with these dates:

Saturday, January 18

Saturday, February 22

Saturday, March 15

Saturday, April 19

The breakfasts will be held in the Fellowship Hall at 8:00 am and are open to all men in our community, as stated in our Mission Statement "to provide men of the congregation and the community fellowship, spiritual growth and service opportunities while growing interpersonal relationships to benefit each other."

Tickets for the January breakfast will be on sale in the FH beginning January 5, 2014.



Christmas Cantata Reception

We need homemade cookies, bars, and fancy bread for the reception in the Fellowship Hall following the Christmas Cantata by our choir.

Sign up will be available in the FH after church on Sundays, December 1 & 8.

Drop off times in the FH are Tuesday, December 10 between 2:00 - 3:00 PM or Wednesday, December 11 before 11:30 AM. If you have any questions, call Audrey Pizarz at 269-4846.



Caregiver's Support Group

Join us at the Hyde's home for our Christmas Caregiver's Luncheon on December 3 from 12:30 - 3:00 PM. Our guest speaker will be Janet Rooks from Parrish Senior Solutions.

Looking forward to fun, food and frivolous behavior for all. Call Martha Hyde at 267-3113.

Gas Grill Needed

The GOCC Men's Group is in need of a gas grill. If you have one in good working condition that you would like to donate, please contact Lee Miller at 383-5093. Thank you!



Ray Z Bible Study

The Adult Men & Women's Bible Study class is currently studying the Book of Acts and the Gospel of John. Please join us on Monday evenings at 6:20 in the Fellowship Hall. All are welcome!



In memory of her husband, Ron, Nedra Jackson donated sound equipment to the church.

With each use, Ron will be remembered for his many talents and dedication to serving our LORD.

Thank-you!

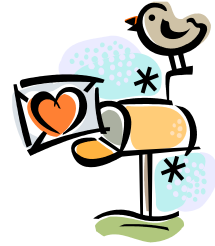
Many Thanks!

To all my friends at The Great Outdoors, I want to send a special thanks for the wonderful surprise of well wishes I received.

I've been so blessed to be able to spend 21 years at The Great Outdoors. I have made so many great friends and memories that I will always treasure. My husband, Bill, only got to enjoy The Great Outdoors for a few years but always called it "Heaven on Earth". Thanks for all the hugs and kisses and well wishes!! I am starting a new chapter with my daughter in Nashville but will always look back to all of you with great fondness. A special thanks to Pat Hopper for making the surprise possible and for all the great memories and friendship we have enjoyed together.

Love to all, *Geri Gaggins*

Thank You



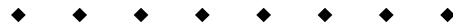
To: The Great Outdoors Church Family

A million thanks goes out to all of you for the prayers lifted up for our son, Christopher, before, during, and as he now heals.

Christopher is truly a miracle and a blessing (as many of you know him personally). We love our family at the "TGO" beyond measure!

Thank you again, with much love and God bless you all!

Paula & Phil Carlson



Thank you everyone for your support & prayers! I was blessed to have great doctors, nurses...as well as friends & family through this whole ordeal. The prayer shawl was very comforting to have as well! I'm blessed beyond measure to have such a great support system! Thanks again!

God Bless!

Christopher Carlson

Thank-You!

Thanks so much for the prayers and visits from the Great Outdoors Community Church. Thanks for the prayer shawl.

Kay & Eddie Hammond



Women In the Church

WIC ACTIVITIES FOR 2013-2014

ALL MEETINGS WILL BEGIN AT 10 A.M.

Dec. 10—Meeting & Luncheon

Feb. 11—Meeting & Luncheon

Jan. 14—Meeting & Luncheon

Mar. 1—Open Air Market

Jan. 25—Flea Market & Bake Sale

Mar. 11—Luncheon & Business Mtg.

Feb. 8—Love Fest

Apr. 8—Salad Luncheon

Board Meetings will be the first week of each month.

Dec. 5, 2013 at 12:00 PM (Choir Rm.) will be the
Next Board Meeting this season.

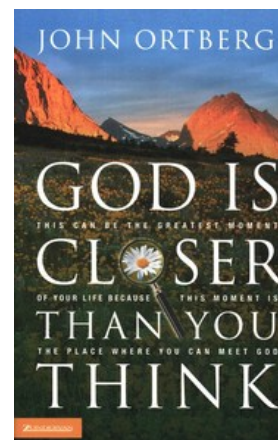


WIC Bible Studies

Our study in January will be “God Is Closer Than You Think”, to be led by Betsy Dunn, shows how you can enjoy a vibrant, moment-by-moment relationship with our heavenly Father. Bestselling author, John Ortberg, reveals the face of God waiting to be discovered in the complex mosaic of your life. He shows you God’s hand stretching toward you. And, with his gift for storytelling, Ortberg illustrates the ways you can reach toward God and complete the connection, to your joy and his.

We will meet at 9:30 each Wednesday morning in the Fellowship Hall on the following dates:

Jan. 29 ~ Feb. 5 ~ Feb. 12 ~ Feb. 19 ~ Feb. 26 ~ Mar. 5



~ ALL WOMEN ARE INVITED TO ATTEND ~



Pictures from the Nov. 12, 2013 WIC Meeting



Women In the Church Christmas Luncheon

Tuesday, December 10, 2013

10:00 AM

Luncheon catered by Panera Bread

Special Music: Christmas Carol Sing-A-Long

Devotion: “The Gift of a Woman’s Words...
For Her Children and Grandchildren”
Maris Tracy

Program: Dan & Erin Evans
of Cadence International Missionary

*“Life is an exciting business, and most exciting when lived for others.
I am a pencil of God.” Mother Teresa*



FLEA MARKET & BAKE SALE

**Saturday - 8 AM until Noon
January 25, 2014**

A reminder to be thinking about our Flea Market & Bake Sale. Please start collecting items now for this event sponsored by the Women in the Church (WIC) organization of the Great Outdoors Community Church. We have a storage unit available for large items, please contact a chairperson.

Flea Market Chairs:

Marilyn Weigel (268-9793)
Jeanine Bieberich (289-1137)

Bake Sale Chairs:

Julia Biedinger (289-5279)

So get ready, as we hope to have a really large sale this year.

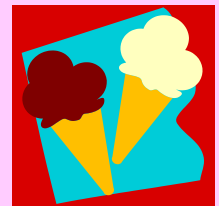


Valentine Love Fest

The Valentine Love Fest is a fundraiser to support our missionary families. Join us for brats, hot dogs, chips, soda and ice cream on February 8th from 11:00 am to 1:00 pm in the Fellowship Hall.

Tickets for \$8 will be sold after Sunday services in the FH on Jan. 19, 26, and Feb. 2. Tickets will also be available in the church office weekdays after Jan. 20th.

Tickets at the door will be \$10.





Christmas Dinner

Great Outdoors Community Church

December 25th at 4:00 PM

Everyone is welcome!

Ham & Raisin Sauce provided

Bring your own table service
and a dish to pass.

Desserts (pies) will be shared.

A freewill offering will be taken

Sign up after Church starting Dec. 1st.

Call Ruth MacDonald 385-9648

or the Church Office 383-0303

To sign up for a table and
a dish to bring.

Also remember we need
some ham bakers!





OPERATION CHRISTMAS CHILD

Thank-You! Thank-You!



Thank you Church Family! Together we sent 260 boxes of Samaritan's Purse. How exciting to send the Gospel of Jesus Christ to this many children all over the world, along with our love.





Memory Garden Committee

The Memory Garden Committee would like to thank all who have made a contribution to the Memory Garden in 2013, whether it was spiritually, financially, and/or with your physical support to keep the plantings, benches, gazebo, and walkways beautiful.

Watch for our plans to celebrate the one year anniversary of the dedication in January 2014.

Please share your experiences in our Memory Garden with us. How has the Memory Garden enhanced your spiritual and daily life this past year? Share your thoughts in a note or in person with one of the Memory Garden Committee members.

We thank-you for your continued support.

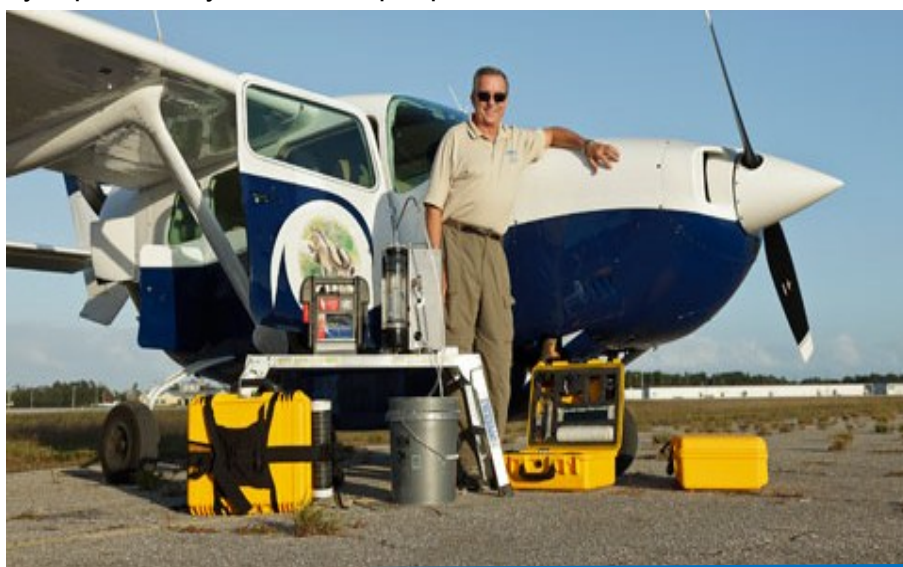
To order a Memory Walk Paver or Columbarium Niche, pick up a form at Great Outdoors Community Church office, 144 Plantation Drive. Monday - Friday, from 9:00 AM to 2:30 PM.





TGO Community Church Buys Three (3) Water Purification Systems, Total Contribution \$6,900.00, Joe Hurston Air Ministry.

(Titusville, Florida, USA) - Missionary, Joe Hurston, President of Air Mobile Ministries, is in the Philippines distributing water purifiers to that nation's typhoon-ravaged population. "It's a catastrophic situation!" His first shipment is 15 water purification units. They will produce pure water for 15,000 people literally for years. The 20 lb. units cost \$2300 apiece and can filter 30 gallons of water every hour. Joe assures there will be no down-time for his units, since he immediately replaces any that develop a problem with no loss of function.



TGO Community Church Buys Bible Translation Kit for Wycliffe Associates. Total Contribution \$3,972.00

(Orlando, USA) – Wycliffe Associates, an international organization that involves people in the efforts of Bible translation efforts, is helping to accelerate Bible translation in remote and dangerous countries by providing national translators with access to timesaving, technology. The kit allows national Bible translators to communicate and share files with translation consultants hundreds or thousands of miles away, eliminating delays caused by unreliable electricity as well as the need for time-consuming travel.

Each TRANSLATION ACCELERATION KIT includes:





“Good News Clubs”

“5) You shall love the Lord your God with all your heart, with all your soul, and with all your strength, 6) And these words which I command you today shall be in your heart. 7) You shall teach them diligently to your children...”
Deut 6:5-7

“Let’s Just Praise the Lord”. Do you remember this old Gaither song? Well we just want to Praise the Lord again and again.

As I mentioned in last month’s Messenger, the Mims Club had not opened yet this year. **Praise the Lord**, on Tuesday, Nov 19th the Mims Club began. We have 19 children registered at this time.

Praise the Lord, a few weeks ago I met with the Principal of Pinewood Elementary, Mims (located far north on Rt. 1). She invited us to start a Good News Club in that school on Thursday’s. We would like to start a Club there in January but without volunteers this won’t be possible.

Praise the Lord! Two children asked the Lord into their hearts during Club at Oak Park.

I ask all of you to pray for this ministry. The “new” room rental fees charged by the Brevard County School Board “surprised” all the Club sponsoring churches... and additional volunteers are greatly needed. Without more volunteers Pinewood will not open and two of the other clubs continue to struggle.

Below is a summary of Clubs and when you can volunteer. All Clubs **begin at 2:30 and end at 3:45 pm**. They meet once a week from now through “Spring Break” in March.

Monday	Coquina Elementary	No volunteers needed
Tuesday	Mims Elementary	Volunteers needed
Wednesday	Oak Park Elementary	Volunteers needed
Thursday	Pinewood Elementary	New club–volunteers needed

If you have a love for children, are male or female, we guarantee you will be blessed by serving in this ministry. To volunteer contact Cindy Manire at 321-385-1130.

Thank you for your prayers,

Cindy Manire
Good News Clubs
Team Leader

“12) Gather the people together, men and women and little ones... That they may hear and that they may learn to fear the Lord your God and carefully observe all the words of this law. 13) and that their children, who have not known it, may hear and learn to fear the Lord your God... Deut 31: 12-13



New Years Eve

Covered Dish Dinner

At 5:00 PM - Fellowship Hall

Sign Up Dec. 15th, 22nd & 29th.

Bring dish large enough for 12 servings

Place Settings, Coffee & Tea Provided

**Join together in a time of
FELLOWSHIP and GREAT FOOD!!**

Bring your friends & neighbors!

**Planned at 5 PM so you can attend
other gatherings later.**

GREAT OUTDOORS COMMUNITY CHURCH

CONCERT SCHEDULE FOR 2013-2014

Wednesday	December 11	7:00	Christmas Cantata
Sunday	January 12	6:00	Allen Family
Wednesday	January 29	7:00	Hyssongs *
Sunday	February 9	6:00	Whisnants
Wednesday	February 26	7:00	Tim Lovelace *
Wednesday	March 12	7:00	Triumphant Quartet *
Sunday	March 23	6:00	Mark Trammell Quartet
Sunday	April 6	6:00	Karen Peck and New River
Wednesday	April 16	7:00	Easter Cantata

*Church Supper precedes concert at 6:00 P.M. with reservations required

LOVE OFFERING taken during each concert and cantata

Concert information: 321-385-9731 or 321-383-9437



THE ALLEN FAMILY

IN CONCERT



GREAT OUTDOORS COMMUNITY CHURCH

144 Plantation Drive

Titusville, Florida

SUNDAY-JANUARY 12th-6:00 PM

info: 321-383-9437. 321-385-9731

LOVE OFFERING WILL BE RECEIVED

HYSSONGS IN CONCERT



GREAT OUTDOORS COMMUNITY CHURCH

144 PLANTATION DRIVE, TITUSVILLE, FL

WEDNESDAY, JANUARY 29th
7:00 PM

LOVE OFFERING WILL BE RECEIVED

SUPPER PRECEDING CONCERT WITH RESERVATIONS: 383-0303

FOOD PANTRY

Our Food Pantry is now preparing to feed families a Christmas Dinner. So we need to help them supply all of the necessary food items to get this accomplished. For items you are placing in the containers in the Narthex, keep our Christmas Dinner goal in mind.

Fortunately for those who would rather contribute by cash or check, we make it easy. Just put a cash/check gift in a collection envelope marked "FOOD PANTRY" and put it in the collection basket. Our church elves will then go grocery shopping and get the necessary items and pass them along to our food pantry. The need is particularly great this year...we need your help. THANKS!



THERE ARE HUNGRY FOLKS WAITING...DON'T FORGET THEM, PLEASE!!



Helping Hands is a year round organization that provides services to the Church and TGO community. We always need more volunteers to help cook meals for the sick, provide rides for those who no longer drive, fix minor issues in your homes that you can no longer do for yourselves, loan out medical and baby equipment when needed, and provide senior information on available services. If you are willing to help please call Elaine Stewart at 383-4233. If you or a neighbor needs help call the appropriate ministry leader as listed below:

To volunteer for our other services or report a need, call or email the appropriate person below:

Home Repair—Elaine Stewart	383-4233	elainerstewart@gmail.com
Temporary Meals—Lorraine Murphy	267-6465	lmurphy22@cfl.rr.com
Transportation—Sharon Fitch	383-5473	jfitch7080@aol.com
Lending Closets—Lynn Foraker	385-1251	foraker@cfl.rr.com
Senior Resources—Clariece Lewis	267-7382	clariece@cfl.rr.com

Sun	Mon	Tue	Wed	Thu	Fri	Sat
1 Communion 9:30 AM Worship 10:30 AM Fellowship	2 10:00 am Nedra's Bible Study 6:20 pm Ray Z Bible Study, Sanctuary 6:30 pm Hymn Sing, FH	3 1:00 pm Caregiver's, Choir Rm. 6:30 pm O'Hana Study Group, FH Ray Biedinger	4 6:30 pm Wed. Evening Study Group, FH	5 8:00 am Prayer 9:00 am Worship Team Mtg., FH 11:00 am Pastor's Bible Study, FH 12:00 pm WIC Board Mtg., Choir Rm.	6 10:00 am Choir 2:00 pm Outreach Committee	7
8 9:30 AM Worship 10:30 AM Fellowship	9 10:00 am Nedra's Bible Study 6:20 pm Ray Z Bible Study, FH	10 10:00 am WIC Mtg. 1:00 pm Set-up for Cantata 2-3:00 pm Drop-off Refreshments, FH 3-4:30 pm Plating Refreshments, FH 6:30 pm O'Hana Study Group, in the Sanctuary Ray Biedinger	11 8:30-11:00 am Drop-off cookies 12:30-2:00 pm Plating Refreshments 5:00 pm Prep for Cantata, FH 7:00 pm Christmas Cantata	12 8:00 am Prayer 11:00 am Pastor's Bible Study	13 9:00 am Prayer Shawl Ministry 10:00 am Choir	14 9:00 am Board Mtg., FH
15 9:30 AM Worship 10:30 AM Fellowship	16 10:00 am Nedra's Bible Study 6:20 pm Ray Z Bible Study, FH	17 1:00 pm Caregiver's, Choir Rm. 6:30 pm O'Hana Study Group, FH Ray Biedinger	18 6:30 pm Wed. Evening Study Group, FH	19 8:00 am Prayer 9:00 am Missions Cmte. Mtg., Choir Rm. 11:00 am Pastor's Bible Study	20 10:00 am Choir	21 
22 9:30 AM Worship 10:30 AM Fellowship	23 10:00 am Nedra's Bible Study 6:20 pm Ray Z Bible Study, FH	24 7:00 PM Christmas Eve Service	25 CHRISTMAS  4:00 pm Dinner	26 8:00 am Prayer 11:00 am Pastor's Bible Study	27 9:00 am Prayer Shawl Ministry 10:00 am Choir	28
29 9:30 AM Worship 10:30 AM Fellowship	30 10:00 am Nedra's Bible Study 6:20 pm Ray Z Bible Study, FH	31 New Year's Eve Gathering, FH				

GOCC Small Groups 2013—2014

Small groups provide a unique opportunity for the participants to engage in spiritual growth, Biblical study, Christian fellowship and in loving support of one another. God's Word stresses the importance of meeting together for the purpose of achieving the above objectives. We, at the Great Outdoors Community Church, strongly believe in and support small groups. Please consider joining one of the groups listed. If you would like to either host or lead a new small group, then please contact Pastor Wes. Additional information on any of our existing groups can be obtained from the leader, host/hostess or by calling the church office.

MEN'S BIBLE STUDY GROUP

LEADER – Ray Malone 593-0083
(email: rmalone18@cfl.rr.com)
MEETS – Mondays 9:00 AM (will resume in Jan. 6, 2014)
LOCATION – Choir Room
TOPIC – Deeper Spiritual Life

MONDAY LADIES BIBLE STUDY

LEADER – Nedra Jackson 268-4817
MEETS – Mondays 10:00-12:00 noon (year round)
LOCATION – Fellowship Hall
TOPIC - A study of the Bible

MEN'S & WOMEN'S BIBLE STUDY GROUP

LEADER – Ray Zielinski 264-2098
(email: sandyzi@aol.com)
MEETS – Mondays at 6:20 PM (began Oct. 28, 2013)
LOCATION – Fellowship Hall
TOPIC - The Mosaic Law, the Book of Acts,
and the Gospel of John

CAREGIVER'S SUPPORT GROUP

LEADERS – Martha Hyde 267-3113 or
Clariece Lewis 267-7382 (email: clariece@cfl.rr.com)
MEETS – 1st & 3rd Tuesdays at 1:00-2:30 PM (year round)
LOCATION – Church Choir Room
TOPIC – Varied as appropriate for caregivers

O'HANA STUDY GROUP

LEADERS – Ray & Julia Biedinger 289-5279
(email: rayjulb1@earthlink.net)
MEETS – Tuesdays at 6:30 PM (began Nov. 12, 2013)
LOCATION – Church Fellowship Hall
TOPIC - The Gospel of Luke

GRIEF SHARE SUPPORT GROUP

LEADERS - Martha Hyde 267-3113 and
Bonnie Murton 268-0151
MEETS - Wednesdays at 2:00 PM
(will resume Jan. 8, 2014)
LOCATION - Pastor Wes' Office
TOPIC - To provide support for those who have lost
loved ones.

THURSDAY MORNING PRAYER GROUP

LEADERS - Diana Green 362-5224 (email: diana-
green55@yahoo.com) and Cindy Manire 385-1130
MEETS – Thursdays from 8:00-9:00 AM (year round)
LOCATION - On the front platform in the church
TOPIC – Praying for the needs of the church

PASTOR'S BIBLE STUDY

LEADER – Dr. David W. Price, Lead Pastor 383-0303
MEETS – Thursday mornings from 11:00-NOON (year round)
LOCATION – Church Fellowship Hall
TOPIC – Study of the Book of Hebrews

LADIES PRAYER SHAWL GROUP

LEADER - Rosalind Zahn 269-7957 (email: dzahn@aol.com)
MEETS - 2nd & 4th Fridays at 9:00 am (began Nov. 8, 2013)
LOCATION - Church Narthex
TOPIC - Knitting of prayer shawls and prayer time for the sick

OLD FASHIONED HYMN SING

LEADERS - Henry & Audrey Piszarz 269-4846
MEETS - First Monday of each month at 6:30 PM
(began Nov. 4, 2013)
LOCATION - Fellowship Hall
TOPIC - Singing the old hymns of the faith

LADIES MONDAY AFTERNOON GROUP

LEADER - Judy Sharp (email: jks-gs@yahoo.com)
MEETS - Mondays at 2:30 PM (begins Jan. 6, 2014)
LOCATION - Nestricks' home: 328 Club Cove
TOPIC - "Living Deeply" (a study of the parables of Jesus)

SUNDAY NIGHT FELLOWSHIP

LEADERS - Lyn & Betsy Dunn
MEETS - Sundays at 6:00 PM (begins Jan. 5, 2014)
(will not meet if there is a concert scheduled)
LOCATION - Church Fellowship Hall
TOPIC - "Pray Big: The Power of Pinpoint Prayers"

WEDNESDAY EVENING STUDY GROUP

LEADER - Roger Bieberich
MEETS - Wednesdays at 6:30—7:30 PM (began Nov. 6, 2013)
LOCATION - Church Fellowship Hall
TOPIC - "The Wonders of God's Creation"

REGISTRATION & INFORMATION FORM



AT



Lake Yale
Baptist Conference Center

SPIRITUAL RETREAT

March 24-26, 2014

Lake Yale Baptist Conference Center, Leesburg, Florida

Check-in is Monday March 24 after 3:00 P.M.; Retreat begins with dinner at 5:30 PM; Retreat ends on Wed. March 26 after lunch.

RETREAT HIGHLIGHTS

- Inspirational study, music, food, free time and great fellowship
- Lovely walking areas for healthy exercise and quiet meditation
- Motel rooms include king size beds, private bath, and linens
- RV sites: full hookups and some dry camping
- Cafeteria-style dining room
- While at the retreat, you may be reached at 1-352-483-9800 if there is an emergency.
- Lake Yale Center is a smoke-free/alcohol-free environment (building & grounds).
- No pets are allowed in the motel rooms.
- Small pets are allowed in RV's, but they must primarily be kept inside.

Accommodation Options and Costs (includes 6 meals)

- Option 1:* Couple/ two people in a motel room.....\$305.00
- Option 2:* Single/ one person in a motel room.....\$205.00
- Option 3:* Couple/ two people on an RV site.....\$225.00
- Option 4:* Single person on an RV site.....\$140.00

Completed Registrations & Payment due by January 26, 2014

Payment by check or cash is needed at the time you sign up. Checks are to made payable to
"Great Outdoors Community Church Retreat Account."
Please return completed registration along with payment to Pastor Wes.

Name: _____ Number of Attendees _____

Accommodation Option #: _____ RV Length _____

Amount Paid: \$ _____